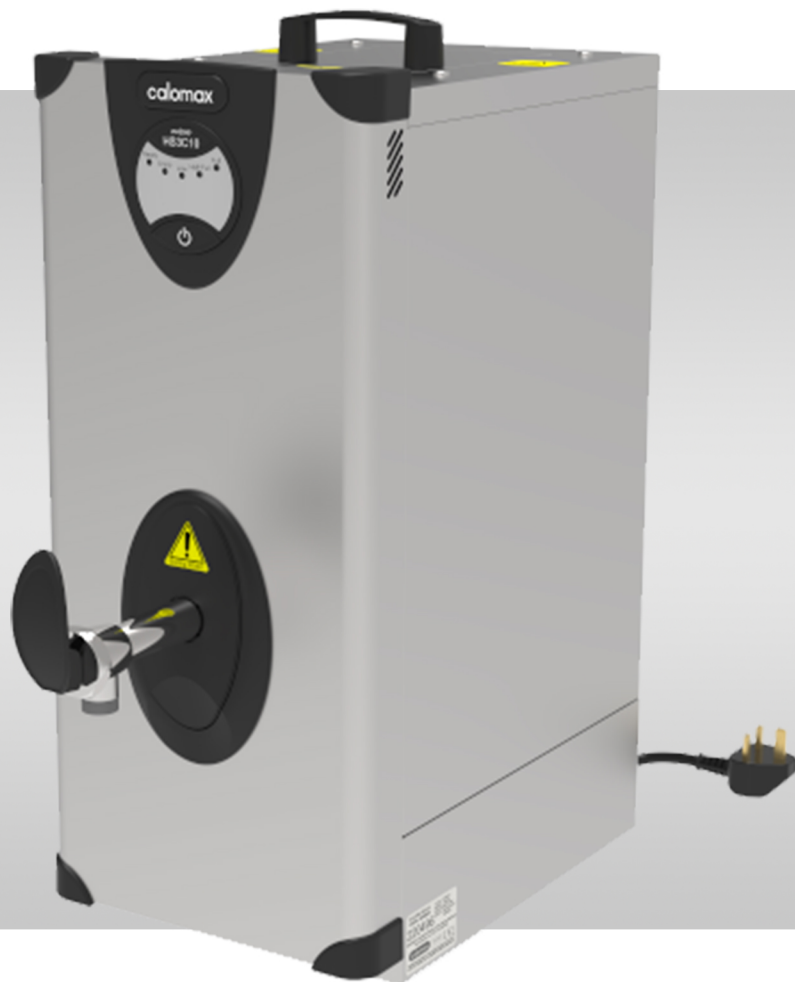
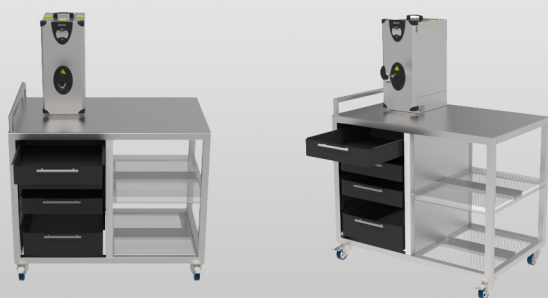
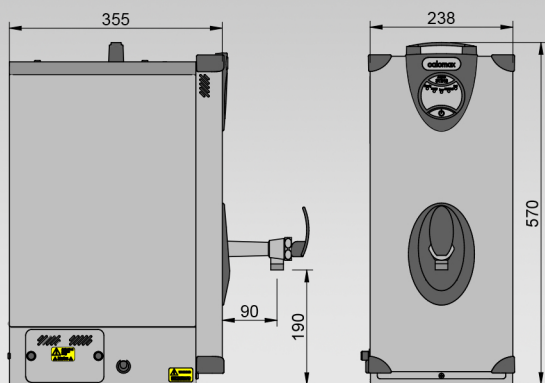


ECLIPSE HS3C10



Key Features:

- UK designed and made
- Designed to be used as a part of a hydration station
- 10L rapid draw off
- Temperature set at 94 to 95°C
- Easy install and service features - removable front panel
- Manual fill
- Antimicrobial protection in the tap handle
- Clear and unambiguous self-diagnostic display panel
- Integral scale-inhibitor technology
- 2-year warranty
- Nylon cool-to-touch handle
- Supplied with a strong coiled 13A plug and lead
- Discrete on/off switch incorporated into moulding
- Competitively priced
- Easy service valve access to allow for easy drainage
- Designed to fit to catering trolley
- User friendly operation for use around a ward



SIZE	REF	CASING	RATING	CAPACITY (manual fill maximum draw-off)	DIMENSIONS (W x D x H)
10 LITRE	HS3C10	STAINLESS STEEL	3kW	10 LITRES PER FILL	240 x 355 x 570